

Salame Piemonte i.g.p.



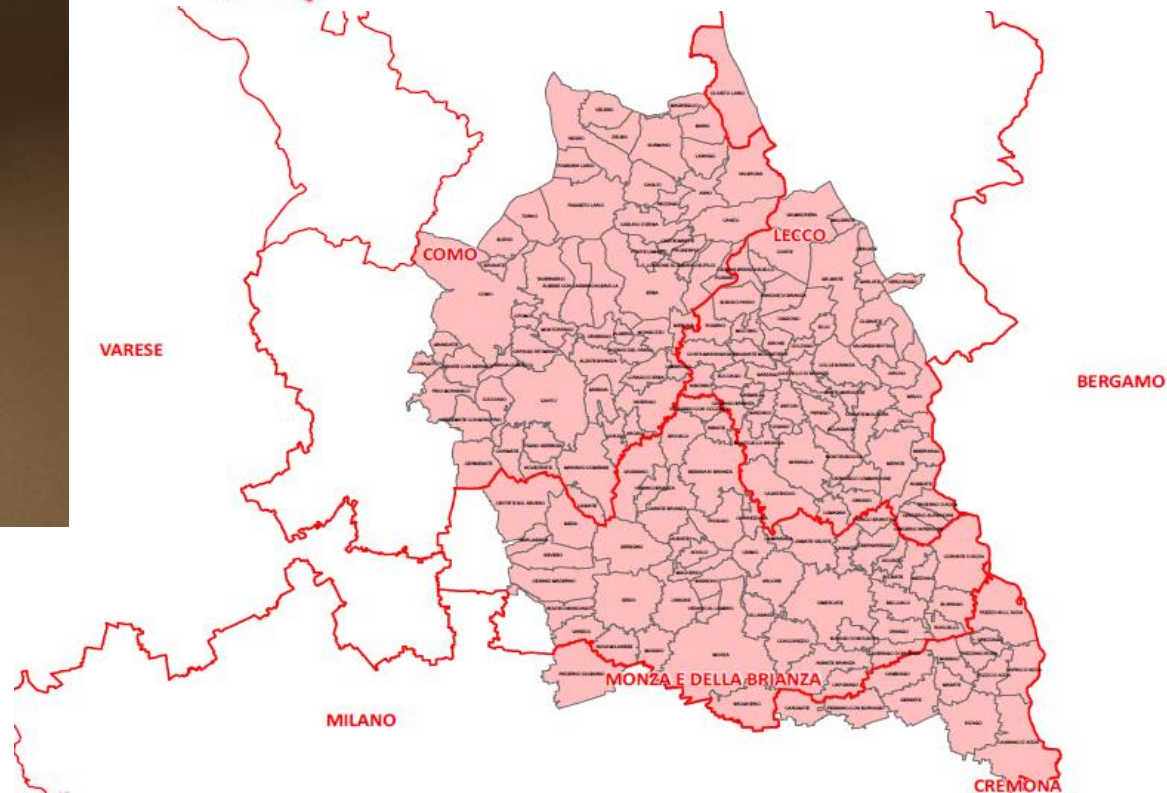
Salame Cremona i.g.p.



Salamini italiani alla cacciatora d.o.p.



Salame Brianza d.o.p.



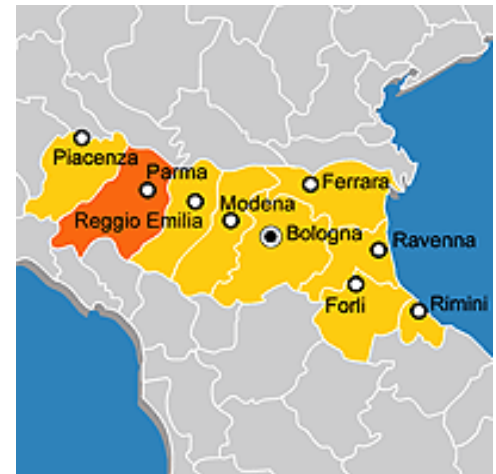
Sopressa Vicentina d.o.p.



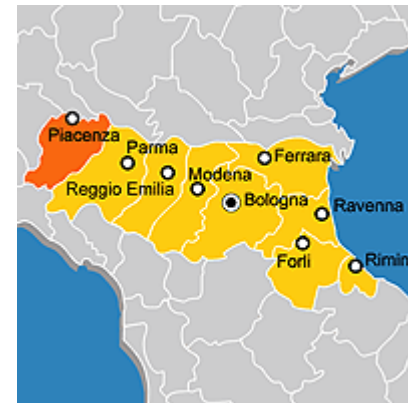
Pitina i.g.p.



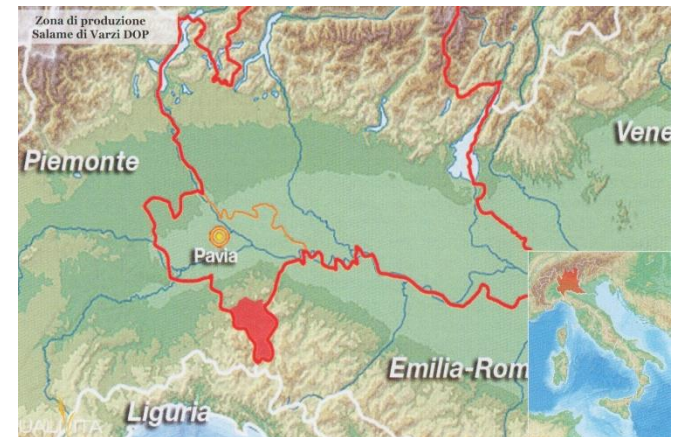
Salame Felino i.g.p.



Salame piacentino d.o.p.



Salame di Varzi d.o.p.



Finocchiona i.g.p.



Ciauscolo i.g.p.



Salsiccia di Calabria d.o.p.



Soppessata di Calabria d.o.p.



Lucanica di Picerno i.g.p.



Salame S. Angelo i.g.p.



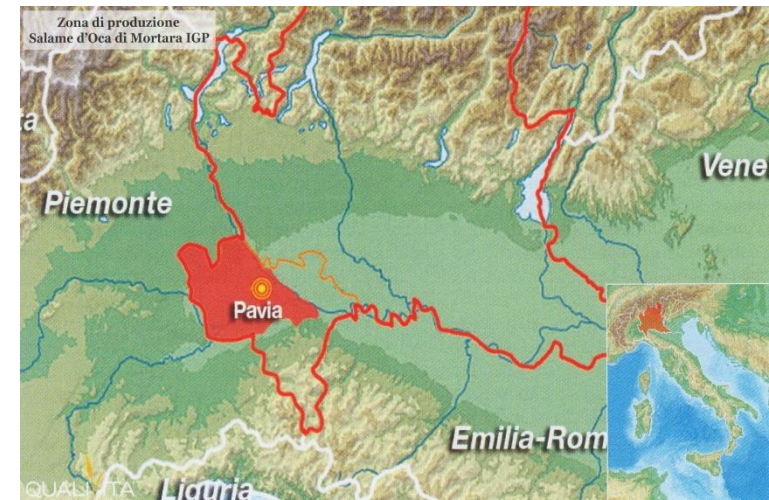
Salame S. Angelo
INDICAZIONE GEOGRAFICA PROTETTA



Salama da sugo i.g.p.



Salame d'oca di Mortara i.g.p.



Mortadella di Prato i.g.p.



Mortadella Bologna i.g.p.

